

# Profiles in Women's Health

A SUMMA HEALTH SYSTEM PUBLICATION • WINTER 2011



**6**  
The Consortium for Safe Labor

**9**  
Residency Program in Robotics includes Safety Checklist

**12**  
Addressing Unmet Needs in Women's Health

**15**  
Research and Innovation – Summa Foundation Grants Award to Women's Health Services

**18**  
In-situ Simulation Program Receives Award from Ohio Patient Safety Institute

**21**  
The Impact of Social Media on Reaching Targeted Audiences to Educate and Inform Women on Health Issues

# SUMMA HEALTH SYSTEM: AN OVERVIEW

Summa Health System is an Integrated Healthcare Delivery System that provides coordinated, value-based care across the continuum for the people and populations we serve. We hold ourselves clinically and financially accountable for health outcomes in our communities.

We integrate the resources of seven owned, affiliated and joint venture hospitals; a regional network of ambulatory centers, a network of more than 1,000 physicians that includes a 250+ employed multi-specialty group, a 150,000+ member health plan, a System-level foundation and 10,000 employees, nurses and healthcare professionals to provide the right care at the right time in the right place for our patients.

As an Integrated Healthcare Delivery System, we are positioned to utilize the strengths of the organization to become a national model of excellence for other organizations to follow. ■

At Summa Health System today, you see the healthcare system of tomorrow.

# LETTER FROM WOMEN'S HEALTH SERVICES LEADERSHIP TEAM

Dear Colleagues and Friends:

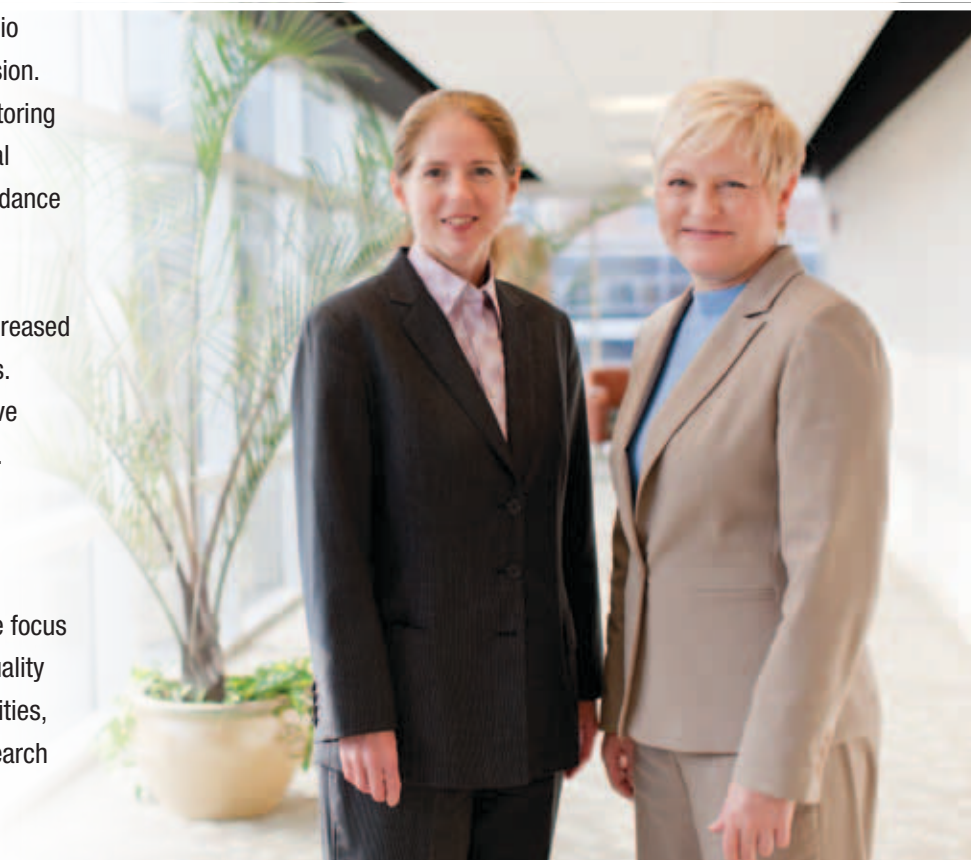
The mission of Summa Health System is to provide the highest quality, compassionate care to our patients and members and contribute to a healthier community. The vision of women's services is to be the premier center of women's health in Ohio. In 2011 we reached many milestones in this journey and we anticipate greater successes in 2012.

Summa Akron City and St. Thomas Hospitals ranked\* as the number one hospital in the Akron, Ohio metropolitan area. Gynecology was one of the eight high-performing specialties. In addition, our obstetrical outcomes ranked better than the state average for the core perinatal measures.

The core measures are determined by the Ohio Department of Health and The Joint Commission. Strategies have included quality bundle monitoring with a "hard-stop" of inappropriate obstetrical elective delivery and excellence with the avoidance and management of uterine contractions.

Physician engagement has improved with increased participation at monthly department meetings. Additionally, physician satisfaction scores have improved 25 percentile points since last year.

Research in the department of obstetrics and gynecology is funded by the government, foundations and philanthropists. This year the focus of our *Profiles in Women's Health* includes quality outcomes, minimally invasive surgery, disparities, social media endeavors and our growing research program.



\* US News and World Report, Summer 2011

*Pictured left: Vivian von Gruenigen, M.D. Pictured right: Susan Sorboro, RN*

---

Summa Foundation awarded the department of obstetrics and gynecology the Summa Research and Innovation Award (SRIA) to support the establishment of Summa's Center for Women's Health Research (SCWHR). SCWHR strives to improve healthcare through discovery in sciences that impact the health and well-being of women and increase the research portfolio of women's health within Summa Health System.

SCWHR research objectives are organized into five foci representing the most pressing issues in women's healthcare and research today. These include:

- Safe obstetrics
- Women's cancer
- Pelvic pain
- Perinatal mental health
- Disparities

The main investigators are individuals with exceptional accomplishments and include doctors of philosophy, medical doctors, nurses with master's degrees in nursing science and a doctor of nursing practice. Since January 2011, SCWHR researchers have been on the national stage, featured in NBC News and *The Wall Street Journal*. A national presence helped build a substantial funding base for SCWHR research initiatives, totaling more than \$1 million with additional future dollars in pending grants, including two proposals for NASA.

Quality patient care is paramount for Summa Health System. The perinatal safety team conducted a study exploring elective obstetrical inductions by cervical status. This research was presented at this year's national American College of Obstetrics and Gynecology (ACOG) meeting. Findings suggest eliminating unfavorable cervix elective inductions due to morbidity and cost for mother and infant. Spontaneous labor, not surprisingly, is a good thing.

The use of robot-assisted surgery exploded nationwide over the last several years. This technique has been applied to surgical procedures by urogynecologists, infertility specialists, gynecologic oncologists and general gynecologists. The advantages of faster recovery, less post-operative pain, less operative complications and faster return to normal activities have been well documented in the gynecologic literature.

The introduction of new surgical technologies requires strict guidelines for patient safety as well as physician credentialing, training and assuring surgical skills are maintained. Summa Health System has taken a progressive approach to assure patient safety by regularly reviewing surgeon's outcomes and developing a robotics steering committee. The committee is comprised of surgeons from multiple disciplines such as urology, gynecology and bariatric surgery.

Patient safety is foremost in a healthcare setting, including the operative suite. The World Health Organization (WHO) has developed the Safe Surgery Saves Lives Checklist as a tool to decrease the frequency of operative mistakes. Data shows medical institutions that have implemented the WHO checklist have seen a decrease in operative mistakes. At Summa Health System, under a grant from Intuitive Surgery, a novel computerized checklist has been developed for robotic surgeries. The Robotic Operating Room Computerized Checklist (RORCC), based upon the WHO checklist, implements a touch-screen computer that is displayed prominently in the operating suite.

---

The RORCC implements a team approach in which all members of the operating room team — anesthesia, nursing and surgeon — participate in the pre-operative, operative and post-operative management of the patient. This system should prove to be an effective tool in eliminating errors associated with minimally invasive robotic surgery.

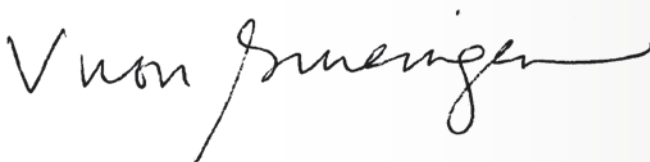
The Internet and social networking have drastically changed the way we discover, consume and share information. With a widespread and diverse online audience, social media provides a direct opportunity for hospitals and health systems to connect with communities, patients, employees, physicians and anyone who has access to the Internet.

Summa Health System is actively engaged in social networking through Facebook ([www.facebook.com/summahealth](http://www.facebook.com/summahealth)), Twitter ([www.twitter.com/summahealth](http://www.twitter.com/summahealth)), YouTube ([www.youtube.com/summahealthsystem](http://www.youtube.com/summahealthsystem)) and LinkedIn. Summa's women's health services launched a women's health blog, *Flourish* ([www.summaflourish.org](http://www.summaflourish.org)). For women who are pregnant, Summa's text messaging service sends weekly health-related messages based on their due date.

In addition, we also offer a monthly e-newsletter, *Blossom and Bloom* ([summahealth.org/womens](http://summahealth.org/womens)). I am the lead blogger for *Flourish* and provide information, education and expert insight. Often, I invite clinical colleagues and patients to guest blog on specific topics. A blog entry is posted at least twice a week and readers are encouraged to leave comments or ask questions. Also, we are collaborating with researchers from Kent State University to apply for grants from the National Institutes of Health and the National Science Foundation to better understand how to use social media channels to reduce health disparities in the community.

In summary, we are proud of the care we deliver to women. Our health system and our providers are indeed luminary and we are grateful for the opportunity to provide quality healthcare to the women in our community. ■

Sincerely,



Vivian von Gruenigen, M.D.  
System Medical Director for Women's Health  
Chair, Obstetrics and Gynecology  
Summa Akron City and St. Thomas Hospitals  
Summa Foundation Endowed Chair in Women's Health



Susan Sorboro, RN, MSN  
System Director, Women's Health Services

# THE CONSORTIUM FOR SAFE LABOR — NEW EVIDENCE-BASED STRATEGIES AT SUMMA HEALTH SYSTEM ARE DESIGNED TO PROVIDE THE SAFEST POSSIBLE OBSTETRIC CARE

Tiffany Kenny, RN, MSN, C-EFM

Summa Health System women's health services is an active participant in the Consortium for Safe Labor which is funded by the National Institutes of Health and the National Institute of Child Health and Human Development (NICHD). The Consortium is comprised of 12 hospital systems (19 hospitals) representative of the American College of Obstetrics and Gynecology (ACOG) districts. As part of the Consortium, Summa Health System has authored seven practice-changing research articles, including five in the past year (see Figure 1) addressing contemporary issues of intrapartum care.

A landmark study, "Contemporary Patterns of Spontaneous Labor with Normal Neonatal Outcomes" published in the December 2010 issue of *Obstetrics & Gynecology*, updates the normal labor curve since Dr. Friedman's study in the 1960s. The study suggests in today's population, progress from 4 centimeters to 6 centimeters was far slower than previously described. Allowing labor to continue for a longer period before 6 centimeters of cervical dilation may reduce the rate of intrapartum and subsequent repeat cesarean deliveries in the United States.

## Quality Bundles

"Bundles" are an increasingly popular quality intervention developed to mitigate potential perinatal harm. A bundle is a group of evidence-based criteria that are more effective when implemented together than individually. Bundles follow national standards established by expert clinical organizations such as the American College of Obstetricians and Gynecologists (ACOG) and the Association of Women's Health Obstetric and Neonatal Nurses (AWHONN) which are scored in an "all-or-none" fashion.

As a member of the Premier Perinatal Safety Initiative, Summa Health System women's health services implemented the obstetric bundles as introduced by the Institute for Healthcare Improvement. These bundles are for operative vaginal delivery, pitocin augmentation and elective induction. Bundle criteria have been audited monthly since July 2008 by the perinatal safety team. Achievement of every bundle has reached high levels among the best of all the Premier Perinatal Safety Initiative hospitals (Figure 2).

The elective induction bundle criterion supported our successful strategies to prevent elective cesareans and inductions less than 39 weeks gestation. A "hard-stop" process with a detailed consent form and a block at the point of scheduling with a chain of command support was implemented in January 2008.

Extensive staff education, quality monitoring and monthly reporting to clinicians also has been included. Results are promising with 20 months of zero incidence (Figure 3).

We believe preventing inappropriate inductions also affected our cesarean rate, particularly for nulliparous, term, singleton, vertex women. This cesarean rate is a nationally utilized, risk-adjusted metric required by the state of Ohio and The Joint Commission and posted for the public on quality websites. Significant improvement ranked Summa Health System almost three percentage points better for 2010 than the average rate of Ohio hospitals (Figure 4).

Summa Health System also is advancing bundling, pushing its criteria for better outcomes by contributing evidence through research. After attaining 100 percent elective induction bundle achievement, the perinatal safety team conducted a study exploring the morbidity and cost of approximately 200 mother-infant dyads that achieved elective induction bundle criteria, comparing cohorts pre- and post-bundling and also by cervical status at the start of the induction.

Findings suggest eliminating unfavorable cervix elective inductions due to morbidity and cost for mother and infant, which is a step further than the American College of Obstetrics and Gynecology's statement to counsel the woman of the risks. As described previously, we have hard-stopped elective inductions less than 39 weeks and are additionally building buy-in to also hard-stop elective inductions for women with unfavorable cervixes. This study has been accepted for publication.

### Tachysystole

Uterine tachysystole, or too many contractions from the administration of Oxytocin, is a top safety issue nationwide and has become an area of excellence for Summa Health System women's health services.

Figures represent data for Summa Akron City Hospital. Summa Barberton Hospital recently adopted these protocols and data is expected to be available in 2012.

### Figure 1: Research Articles

A Comparison of Obstetric Maneuvers for the Acute Management of Shoulder Dystocia. *Obstet Gynecol.* 2011 Jun;117(6):1272-1278.

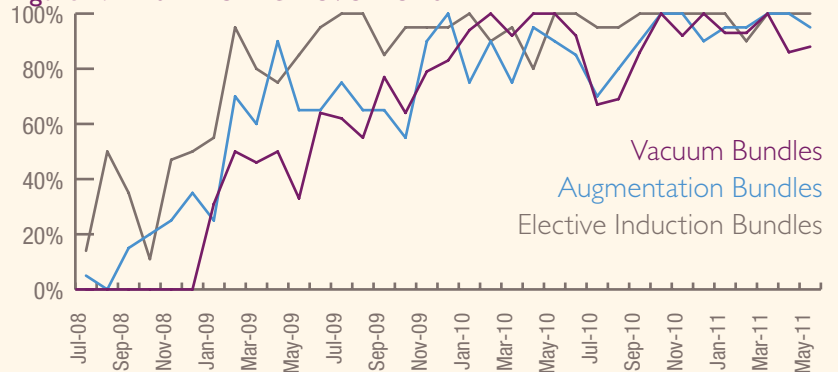
Characteristics Associated with Severe Perineal and Cervical Lacerations During Vaginal Delivery. *Obstet Gynecol.* 2011 Mar;117(3):627-35.

Contemporary Patterns of Spontaneous Labor with Normal Neonatal Outcomes. *Obstet Gynecol.* 2010 Dec;116(6):1281-7.

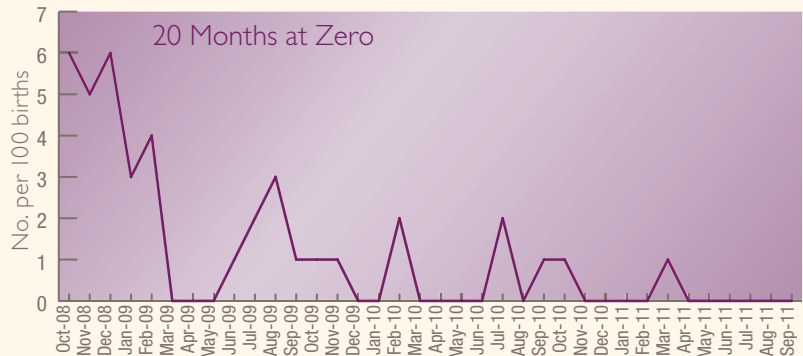
Contemporary Cesarean Delivery Practice in the United States. *Am J Obstet Gynecol.* 2010 Oct;203(4):326.e1-326.e10.

The Maternal Body Mass Index: A Strong Association with Delivery Route. *Am J Obstet Gynecol.* 2010 Sep; 203(3):264.e1-7.

### Figure 2: Bundle Achievement



### Figure 3: Elective Delivery <39/0



### Figure 4: Cesarean Rate

(Nulliparous, Term, Singleton, Vertex)

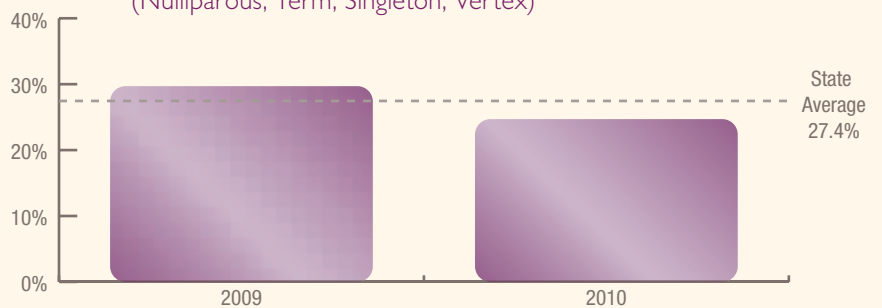
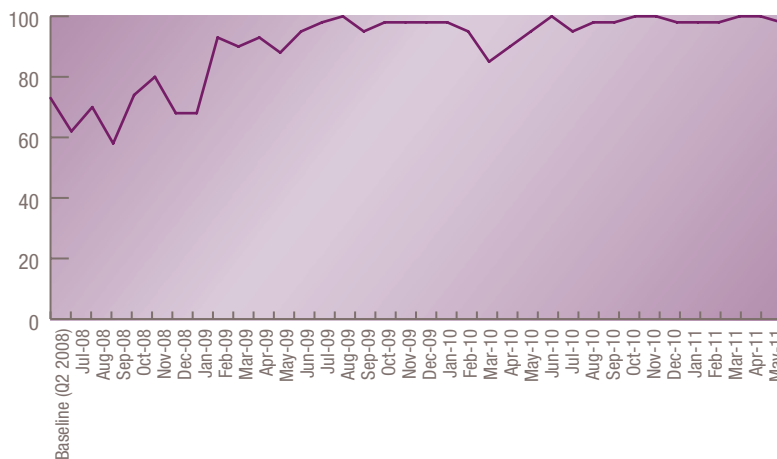


Figure 5:



Uterine Tachysystole avoided or managed appropriately

22 Months  $\geq$  95%

Using an evidence-based algorithm for Oxytocin administration and monthly audits by a peer-review team, we have reached 100 percent compliance. Multidisciplinary follow-up, education and widely disseminated results helped counter resistance and normalization of deviance. The baby no longer “declares itself.” Results have seen 22 months at  $\geq$  95 percent (Figure 5).

Read more in the September/October 2011 issue of the *Journal of Obstetric, Gynecologic and Neonatal Nursing*, the top obstetrics nursing journal, in an article entitled: “A Performance Improvement Process to Tackle Tachysystole.” ■

## About the Author

TIFFANY KENNY, RN, MSN, C-EFM, obtained her master's in the women's health nurse practitioner track at Kent State University. She began her career at Summa Health System as a staff nurse in gynecologic surgery and advanced to informatics administrator for the women's health service line. In her current role, Kenny coordinates a perinatal clinical information system for more than 750 end users in maternity services, a special care nursery and two high-volume women's health outpatient centers. In addition, Kenny is the writer of two accepted research grants: the Consortium for Safe Labor, a 12-hospital project funded by the National Institutes of Health, and Summa's Center for Women's Health Research, a \$500,000 project funded by Summa Foundation. She also is the author of several presentations and publications including “Does Quality Bundling Improve Obstetrical Outcomes: A comparative study of elective inductions,” presented at the 2011 ACOG Annual Clinical Meeting, and “A Performance Improvement Process to Tackle Tachysystole” published in the *Journal of Obstetric, Gynecologic and Neonatal Nursing*. She recently was accepted for publication in the *Journal of Reproductive Medicine*. Kenny's commitment to clinical excellence earned her Summa Health System's Nurse of the Day Award in 2004 and the Excellence in Nursing Award in 2011. She also serves as an academic mentor and preceptor in the University of Akron's graduate nursing education program and Summa's Summer Research Fellowship program.



# RESIDENCY PROGRAM IN ROBOTICS INCLUDES SAFETY CHECKLIST

*Stephen Andrews, M.D.*

The use of robot-assisted surgery has exploded nationwide over the last several years. This technique has been applied to surgical procedures by urogynecologists, infertility specialists, gynecologic oncologists and general gynecologists. The advantages of faster recovery, less post-operative pain, fewer operative complications and faster return to normal activities have been well documented in the gynecologic literature.

For the gynecologic cancer patient, survival outcomes in the treatment of endometrial cancer have shown to be similar to the traditional open laparotomy approach with fewer complications. Women with endometrial cancer typically have multiple co-morbidities including obesity, diabetes and hypertension. Obese patients are at increased risk for serious post-operative complications such as deep vein thrombosis, pulmonary embolism and wound infections, as well as increased operative times and blood loss due to the technical difficulties in operating on an obese patient.

Robotic surgery offers multiple advantages for obese women that include better visualization of the deep pelvis, increased lymph node yield and less surgeon fatigue. More importantly, advantages for the patient include less operative time, less blood loss, decreased risk of thrombosis and fewer

wound complications. Over the past two years, the percentage of women with uterine and early cervical cancer treated at Summa Health System using robotic surgical techniques has increased to more than 80 percent.

The introduction of new surgical technologies requires strict guidelines for patient safety as well as physician credentialing, training and assuring surgical skills are maintained. Data on complication rates, operative time and costs need to be carefully maintained and reviewed on a scheduled basis. Summa Health System has taken a progressive approach to assuring patient safety, credentialing surgeons and regularly reviewing data on robotic surgery.

Patient safety always is paramount in the healthcare setting, including the operative suite. The World Health Organization (WHO) has developed the Safe Surgery Saves Lives Checklist as a tool to decrease the frequency of operative mistakes. Data shows medical institutions that have implemented the WHO checklist have seen a decrease in operative mistakes.

At Summa Health System, under a grant from Intuitive Surgery, a novel computerized checklist has been developed for robotic surgeries. The Robotic Operating Room Computerized Checklist (RORCC), based upon the WHO checklist, implements a touch-screen computer checklist prominently displayed in the operating suite. The RORCC implements a team approach with all members of the operating room team — anesthesia, nursing and surgeon — participating in the pre-operative, operative and post-operative management of the patient. It is hoped this system proves to be an effective tool to eliminate errors associated with minimally invasive robotic surgery.



## About the Author

STEPHEN ANDREWS, M.D., a physician with Summa Physicians Inc. (Gynecology/Oncology), came to Summa Health System by way of private practice in the Columbus, Ohio, region and is a veteran of the U.S. Army where he served as a major in the medical corps. Prior to his position at Summa Health System, Dr. Andrews was associate professor, department of obstetrics and gynecology, division of gynecologic oncology at the University of Toledo and received the Outstanding Faculty and Outstanding Clinical Faculty awards during his tenure there. He continued his commitment to medical education at Summa Health System and was honored with the Teacher of the Year award in 2010. With a definitive interest in ovarian cancer, he has authored dozens of journal articles and abstracts, including "Topotecan weekly bolus chemotherapy for relapsed platinum-sensitive ovarian and peritoneal cancers," published by Gynecologic Oncology, and "Aromatase inhibitors increase the sensitivity of human tumor cells to monocyte-mediated, antibody-dependent cellular cytotoxicity," published by The American Journal of Surgery. He also is a contributing author of Handbook of Cancer Chemotherapy, 7ed. Dr. Andrews is a prolific lecturer and frequent presenter at national events. He is a member of several professional societies including the American College of Obstetrics and Gynecology, of which is he a fellow, the National Board of Medical Examiners and the Society of Gynecologic Oncologists. Dr. Andrews also has served on a number of committees throughout his career, including Summa Health System's robotic committee.

In a response to the dramatic increase in the number of robotic surgeries at Summa Health System, a robotics steering committee was formed to devise and implement a credentialing and privileging guideline for robotic surgery. The robotic steering committee meets to review robotic scheduling, credentialing and complications. The committee is comprised of surgeons from multiple disciplines such as urology, gynecology and bariatric surgery. Nursing is represented with the director of operative nursing services and the robotic surgery coordinator.

Guidelines were implemented for the credentialing of new residency graduate surgeons adding robotic surgery to their repertoire as well as for established robotic surgeons. An integral and novel component of the credentialing process is an annual review of at least 10 robotic cases and all complications related to robotic surgery for each robotic surgeon. The intent is to ensure

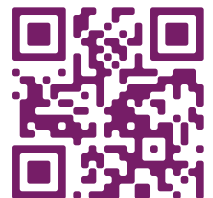
surgeons keep current with, and are proficient in, the use of robotic surgery.

Summa Health System has the newest robotic system which employs a dual console to assist surgeons in learning robotic surgical techniques. Sitting at the console gives the "student" a bird's-eye view of the robotic technique. An integrated voice communication system combined with the teacher's ability to draw and erase on the monitor allows for optimal teaching. This dual console also is integral in training our obstetrics and gynecology residents.

Residents are closely supervised and taught correct robotic technique through a methodical, progressive education protocol. A robotic skills lab is held for residents to allow them to practice robotic suturing and manipulation on inanimate objects. During their four-year program, residents are taught basic laparoscopic skills followed by more technically demanding, minimally

invasive techniques including robotic surgery. This integrated training enables all graduating OB/GYN residents from Summa Health System's program to be eligible to apply for – and obtain – robotic privileges at their new hospitals. ■

Watch a video of one of Summa Health System's robotic surgical teams.



# ADDRESSING UNMET NEEDS IN WOMEN'S HEALTH

*Bradford Fenton, M.D., Ph.D.  
Edward Demond Scott, M.D., MPH*



“Disparities in healthcare” refers to the study of differences in health across different populations. This includes “differences” in disease patterns, clinical outcomes and even access to healthcare across variable domains. While we most often think of health disparities across racial and socioeconomic groups, we also need to consider gender-specific health issues, such as chronic pelvic pain and sexual health, in order to resolve the unmet needs of women in our community.

Summa Health System women’s health services continues to expand its scope of services to improve care for our patients and their evolving health needs. Several of these expanded services, which focus on health issues not widely addressed by women’s health programs, rely on partnerships with community resources to provide unique care targeted to underserved populations. This year, collaborations with University Hospitals in Cleveland, Ohio, the Summa Center for Minority Health & Health Disparities Solutions, Community Legal Aid Services, Inc. and the National Vulvodynia Association have broadened our opportunities to improve care.

The Summa Pelvic Pain Specialty Center, directed by Dr. Bradford Fenton and in partnership with Dr. Tom Chelimsky of University Hospitals, was a collaborating site for their dysautonomias in interstitial cystitis’ study. This is a National Institutes of Health (NIH) funded R01 study of

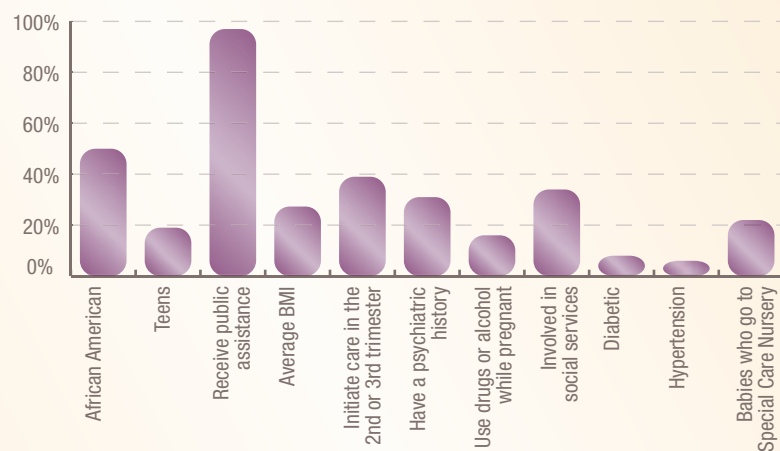
patients with interstitial cystitis — also called painful bladder syndrome — to determine the extent of potential neurological impairment. This study also has adopted a technique pioneered by Dr. Fenton to allow numerical assessment of muscle pain. The investigators can evaluate muscle tension syndromes in a level of detail not previously available. With a better understanding of pain and its interaction with nerves, muscles and bladder, improved treatment methods can be developed.

The department of obstetrics and gynecology also partnered with Dr. Edward Demond Scott and the Summa Center for Minority Health & Health Disparities Solutions to evaluate the impact disparities have on both patient-reported quality of life and their outcomes from different procedures. Currently, this work is ongoing with Drs. Fenton and Scott. The immediate results have demonstrated significant socioeconomic

and educational impact on pelvic pain assessment. Further studies of this nature are ongoing and we hope to eventually develop targeted interventions for patients at risk for suboptimal treatment outcomes.

Community Legal Aid Services, Inc. in Akron is working with Summa Health System’s Women’s Health Center (WHC) to develop a pilot research program designed to improve access to legal services for patients who need them. Our patients face a number of legal challenges, from home foreclosures to credit and debt problems. This program aims to develop a model to identify and assist patients in the management of their legal problems. With these issues under control, they can then focus on healthy lifestyle changes. Dr. Linda Upp serves as the principal investigator of this study, which is available from the generous funds raised by Summa Foundation through an anonymous donor.

The following table shows the demographics of patients who receive healthcare services from Summa Health System Women’s Health Center based on 2010 data:



*Pictured left: Demond Scott, M.D.  
Pictured right: Bradford Fenton, M.D., Ph.D.*

Summa Foundation is the philanthropic organization of Summa Health System that raises dollars in support of Summa Health System's mission.

Dr. Lara Burrows, medical director of the Summa Center for Sexual Health, continues to focus on addressing unmet needs in women, including sexual health and vulvar disease. Her care focuses on the diagnosis and treatment of a range of sexual health issues, from sexual pain to

hormonal regulation and vulvar/vaginal problems. In 2011, the center received unprecedented patient appointments. Dr. Burrows works closely with Kimberly Resnick-Anderson, LISW, a certified social worker and expert in women's sexual health, to provide comprehensive patient care. Dr. Burrows is one of a few physicians selected by the National Vulvodynia Association to participate in their treatment registry. This is a registry dedicated to following women with

vulvodynia over time with the goal of directing further research in the field. ■



*Learn more about how Summa Akron City Hospital's Women's Health Center is providing valuable women's services to its underserved population.*

## About the Authors

**BRADFORD W. FENTON, M.D., PH.D.**, a physician with Summa Physicians Inc. (Gynecology), leads Summa Health System's Pelvic Pain Specialty Center. Under Dr. Fenton's leadership, the center provides a multidisciplinary approach to patients with this condition using an integrated care model. He is a graduate of the Boston University School of Medicine and completed his residency in obstetrics and gynecology at Georgetown University where he was honored with the Resident Research Award. Dr. Fenton has continued his research pursuits in the field of obstetrics and gynecology and has several approved projects underway at Summa Health System, including "Effect of repetitive transcranial direct current stimulation (tDCS) on chronic pelvic pain" and "Pelvic adhesion prevention using autologous platelet enriched gel in a standardized swine model using a quantitative technique." In addition to his clinical, research and leadership roles at Summa Health System, Dr. Fenton also holds several academic appointments including associate professor at Northeast Ohio Medical University (NEOMED) and adjunct professor, department of chemical and biomolecular engineering at the University of Akron for which he's received several awards including the CREOG ACOG National Faculty Award. He is the author of numerous articles, abstracts and presentations including "Application of Patient-Reported Outcomes Measurement Information System to chronic pelvic pain" published by the Journal of Minimally Invasive Gynecology, "Comparison of teenaged video gamers vs. PGY-I residents in obstetrics and gynecology on a laparoscopic simulator" published by the Journal of Minimally Invasive Gynecology and "Measuring quality of life in chronic pelvic pain syndrome" published by Expert Review of Obstetrics & Gynecology.

**EDWARD DEMOND SCOTT, M.D., MPH.**, is a physician with Summa Physicians Inc. (Family Medicine). He obtained his medical degree from Wright State University School of Medicine and his master's of public health from the University of Pittsburgh Graduate School of Public Health. He completed his residency at Summa Akron City Hospital and is board certified in family medicine. He also is certified in public health by The National Board of Public Health Examiners. Dr. Scott has a special interest in minority health and health disparities and currently serves as the medical director for the Center for Minority Health & Health Disparities Solutions. He also is a member of the Akron Minority Health Roundtable, Summa Health System's Diversity Council for Culturally Compassionate Care and Austen BioInnovation Institute in Akron's (ABIA) Center for Clinical and Community Health Improvement workgroup. His demonstrated commitment to improving health outcomes in his community has attracted local and national attention. Dr. Scott received the Harold K. Stubbs Humanitarian Award for Medicine in 2011 and was recognized by The National Committee for Quality Assurance Diabetes Recognition Program for 2010-2013. He is a dedicated researcher and the author of numerous presentations and publications including "Computer Literacy, Health Technology and Behavior Change" presented at the Sixth Annual International Conference on Urban Health, "The Better Weight-Better Sleep Study: A Pilot Intervention in Primary Care" published by American Journal of Health Behavior and "Computer Literacy, Health Technology and Behavior Change" published by the Journal of Urban Health. In addition to his clinical, advocacy and research endeavors, Dr. Scott also holds an academic appointment as assistant professor of family medicine at Northeast Ohio Medical University (NEOMED).



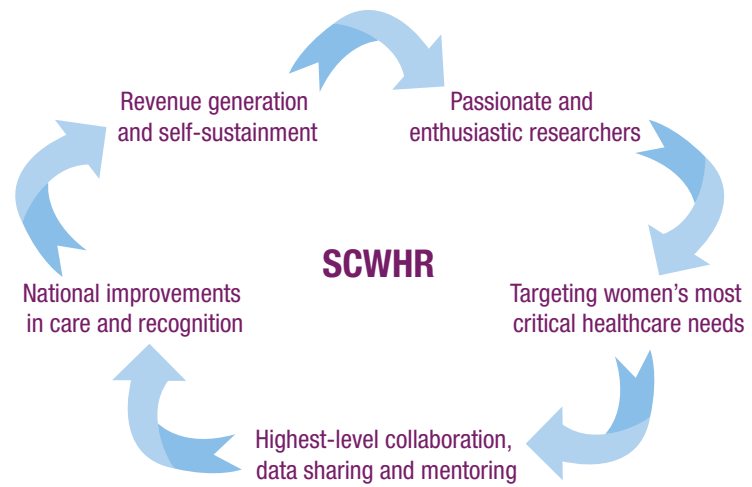
# RESEARCH AND INNOVATION - SUMMA FOUNDATION GRANTS AWARD TO WOMEN'S HEALTH SERVICES

*Tiffany Kenny, RN, MSN, C-EFM*

Summa Foundation awarded the department of obstetrics and gynecology the Summa Research and Innovation Award (SRIA) to support the establishment of Summa's Center for Women's Health Research (SCWHR). This multidisciplinary research team works together to improve the most critical healthcare needs across the lifespan of women.

SCWHR strives to improve care through discovery in sciences that impact the health and well-being of women and to increase the research portfolio of women's health within Summa Health System.

SCWHR will be self-sustaining through proven key personnel, outside support, extramural funding, national-caliber research leadership and mentoring of future leaders.



Specific aims of SCWHR are:

- Foster research that explores determinants of health and disease with an emphasis on women
- Encourage a multidisciplinary collaborative approach to research
- Integrate researchers with healthcare providers who understand gender specifics of health and disease and embrace diversity
- Facilitate the translation of basic research into clinical practice
- Become the authoritative resource for the region on women's health issues and provide opportunities to engage women in advancing research

SCWHR research objectives are organized into five foci representing the most pressing issues in women's healthcare and research today.

1. **Safe obstetrics** builds on Summa Health System's position on the national forefront of obstetric patient safety initiatives. This focus allows for the development of new literature to improve America's poor ranking in infant mortality and addresses top areas of childbirth harm.

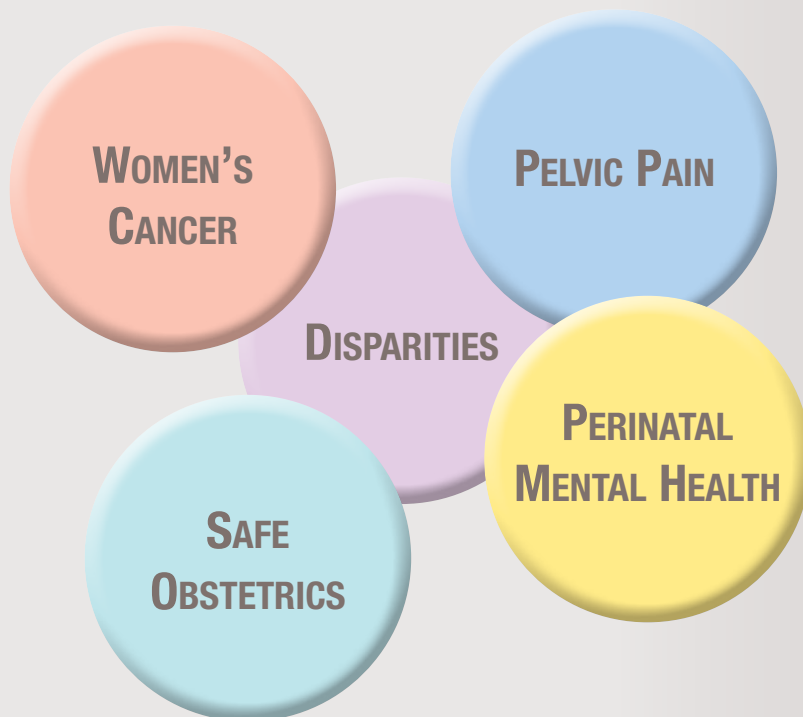
2. The **cancer** domain is concentrated on the most common gynecologic cancer (endometrial) with its strong link to obesity. In addition, ovarian cancer quality of life is a focus.

3. The **pelvic pain** focus is significant as SCWHR investigators are showing great promise in new techniques to treat pain and make surgery safer with fewer adhesions which complicate 55 to 90 percent of women's surgeries. Traditionally, this has increased financial burdens and has significant implications on lifestyle and quality of life.

4. The **perinatal mental health** focus concentrates on depression, the leading cause of disability for women in the U.S. and worldwide. Existing research continues with an emphasis on screening and treatment plans.

5. The **disparities** focus supports Summa Health System's mission to provide the highest quality, compassionate care to patients and members and to contribute to a healthier community. The goal is to identify gaps in care for the most vulnerable women and develop interventions to improve outcomes and costs.

### SCWHR Objectives



Care of women patients and their families is best done with a multidisciplinary team approach, and SCWHR reflects this. The main investigators are individuals with exceptional accomplishments and include doctors of philosophy, medical doctors, nurses with master's degrees in nursing science and a doctor of nursing practice. The more experienced researchers and writers help mentor and develop others.

Since January 2011, SCWHR researchers have been on the national stage, featured in NBC News and *The Wall Street Journal* and presented at three national conferences including the American College of Obstetricians and Gynecologists, the Association for Women's Health, Obstetrical and Neonatal Nurses and the American Society of Preventive Oncology.

A national presence helped build a substantial funding base for SCWHR research initiatives, totaling more than \$1 million with additional future dollars in pending grants. This year, four grant applications were submitted with six others in development, including two proposals for NASA.

SCWHR supports Summa Health System's mission to provide the highest quality, compassionate care to patients and members and to contribute to a healthier community. SCWHR also will contribute to Summa Health System's vision to be recognized as one of the finest healthcare organizations in the United States and to be the preferred provider of healthcare services in our area. Every aspect of SCWHR is focused on servant leadership — serving the patient and those who do — with quality, team-based healthcare that is

innovative and individualized to each patient's gender and culture.

From the young woman entering the hospital for the first time and experiencing a difficult delivery to her encounter with depression and pain, from overcoming serious illnesses such as cancer to difficult end-of-life decisions, SCWHR will make a positive difference in her care and outcome. ■

# IN-SITU SIMULATION PROGRAM RECEIVES AWARD FROM OHIO PATIENT SAFETY INSTITUTE

*Timothy Drake, M.D., FACOG  
Tara Snyder, RN, C-EFM*



## Summa Health System women's health services in-situ simulation program was awarded the Ohio Patient Safety Institute Best Practice Award of 2011 and the 2009 Risk Management Award from the American Excess Insurance Exchange.

We applied the well-tested communication drills of the aviation industry to our obstetric emergency teams. Simulation training has been used by the aviation industry since the 1980s. A NASA study of 20 years of aviation data discovered that deficient interpersonal communication was a casual factor in approximately 70 to 80 percent of all accidents. This parallels The Joint Commission's finding that over two-thirds of the obstetric sentinel events were attributed to human factors and communication. In 2010, The Joint Commission reaffirmed drills as a suggested action to prevent maternal death. Summa Health System's in-situ simulation program focuses on team communication using lessons learned from aviation and NASA.

Summa Health System's in-situ simulation program began in 2004 with the Vermont-Oxford Network. In 2008, the simulation program was improved with the establishment of designated simulation coordinators and benchmarking with the Premier Perinatal Safety Initiative. Simulation training has occurred every month since June 2008 with all disciplines including nursing, medicine, anesthesia, ancillary and the neonatal resuscitation team. Staff are scheduled "out of unit" time to attend.

The curriculum includes a "pre-briefing" didactic session on teamwork



and communication where additional roles are assigned and expectations are set. Simulation scenarios follow, such as: uterine rupture, shoulder dystocia, maternal seizure, cord prolapse and postpartum hemorrhage. A debriefing then occurs. Often the scenario is based on recent, real-life cases.

Simulations always are videotaped. The simulations have included actresses and the new NOELLE birth simulator and also have involved the surgery and emergency departments. Following the simulation, the tape is reviewed during the debriefing and performance is discussed, focusing on teamwork and communication. Staff is recognized for "what went well," and issues "that could have gone better" are addressed.

Every simulation yields positive changes in processes and operations on and between units. For example, during an emergency cesarean section, the primary nurse now dons a red hat, signifying she/he has the most

complete information about the patient. Roles have been defined in policy: for example, "RN1," "RN2" and "RN3" in the OR each have specific, delineated responsibilities that close possible gaps in communication.

Emergency checklists were developed and are available on clipboards at all bedsides and also have been incorporated into clinical documentation. Two new page codes were created and now are part of the standard hospital response system: Code "C" and "757." Code "C" is similar to a Code Blue, but is a group emergent cesarean, and "757" is a STAT page for anesthesia. To help nurses quickly identify which doctors are needed in an emergency situation, a perinatal emergency communication tree outlining who calls whom in an emergency was implemented. Resident physician page numbers are posted in every room by the bedside. In addition, the SBAR (standardized communication, "Situation-Background-Assessment-

Recommendation”) was improved through the simulation trainings. Last, the hospital purchased a wireless communication system, Vocera, which is a more efficient form of communication than paging.

Quarterly reports of selected perinatal safety indicators from the National

Perinatal Information Center have been tracked to measure patient safety outcomes. Baseline of calendar years 2006 and 2007 are compared to a follow-up period of July 1, 2008 to current. We have seen the following improvements: adverse outcome index by 18.2 percent, weighted adverse outcome score by 9 percent, and

total number of adverse events by 8.3 percent. We maintained a zero incidence of intrapartum neonatal death >2500 grams, birth hypoxia and asphyxia, and we reduced the incidence of birth trauma, anesthesia complications and postpartum hemorrhage by half. ■



*Watch a video of medical staff working in Summa Health System's virtual simulation lab.*

## About the Authors

**TIMOTHY E. DRAKE, M.D.**, is a physician with Summa Physicians Inc. (Obstetrics/Gynecology). Dr. Drake came to Summa Health System by way of private practice in Massillon, Ohio. Prior to his position at Summa, he was the chair of obstetrics and gynecology at Affinity Medical Center, formerly known as Massillon Community Hospital. Dr. Drake obtained his medical degree from Wayne State University School of Medicine in Detroit and completed his internship and residency at University Hospitals Case Medical Center and The MetroHealth System, formerly known as Cleveland Metropolitan General Hospital. He is board certified in obstetrics and gynecology and is a member of the American College of Obstetricians and Gynecologists. Dr. Drake holds academic appointments at Summa Akron City Hospital's OB/GYN residency program as a full-time core obstetrics and gynecology faculty as well as at Northeast Ohio Medical University (NEOMED) as a clinical assistant professor of obstetrics and gynecology. For his dedication to medical education, he received a National Faculty Award from The American College of Obstetricians and Gynecologists.

**TARA L. SNYDER, RN, C-EFM**, obtained her bachelor's in nursing from Kent State University. She is a registered nurse at Summa Health System's labor and delivery unit. In addition, Snyder is the simulation coordinator for the obstetrics unit's multidisciplinary obstetric and neonatal emergency simulation training program. Through this program, participants are engaged in monthly scenarios based on real-life emergency situations designed to streamline communication and foster multidisciplinary teamwork among all emergency personnel. The simulation program was one of several best practices that attracted attention from the American Excess Insurance Exchange (AEIX), which presented Summa Health System with an award for risk management in 2009. As part of the award, Snyder led a presentation on simulation program development at the national 2010 AEIX industry conference, and she has presented on this topic at local conferences as well. In addition to her nursing and simulation coordination duties, Snyder also is an Association of Women's Health, Obstetric and Neonatal Nurses (AWHONN) member and certified fetal monitoring instructor. As an instructor, she educates Akron-area OB/GYN professionals on the principles of fetal monitoring. Snyder also is the co-author of "Stimulating Simulations: Developing Meaningful In-situ Simulations in a Level III Perinatal Center" published in the Journal of Obstetric, Gynecologic and Neonatal Nursing.



# THE IMPACT OF SOCIAL MEDIA ON REACHING TARGETED AUDIENCES TO EDUCATE AND INFORM WOMEN ON HEALTH ISSUES

(SOCIAL MEDIA RESEARCH, BLOG,  
E-NEWSLETTER, FACEBOOK, TWITTER)

*Michele L. McCarroll, Ph.D., FAACVPR  
Julie Uehara Sur*

The Internet and social networking have drastically changed the way we discover, consume and share information. In the evolving world of Facebook, Twitter and YouTube, the healthcare industry is no exception.

In the United States, approximately 1,188 hospitals use social networking tools. Of those 1,188 hospitals, 548 have YouTube channels, 1,018 have Facebook pages, 788 have Twitter accounts and 137 post blogs.<sup>1</sup> With a widespread and diverse online audience, social media provides a direct opportunity for hospitals and health systems to connect with communities, patients, employees, physicians and anyone who has access to the Internet.

Summa Health System understands the importance of communicating with its constituencies as well as their preferences for both giving and receiving information. To that end, Summa Health System is actively engaged in social networking through Facebook ([www.facebook.com/summahealth](http://www.facebook.com/summahealth)), Twitter ([www.twitter.com/summahealth](http://www.twitter.com/summahealth)), YouTube ([www.youtube.com/summahealthsystem](http://www.youtube.com/summahealthsystem)), LinkedIn and a blog, *Flourish* ([www.summaflourish.org](http://www.summaflourish.org)).

*Flourish's* lead blogger is Vivian von Gruenigen, M.D., chair, obstetrics and gynecology and system medical director for women's health services. Her specialty is gynecologic oncology. As the author of the blog, she provides information, education and expert insight to her readership and often invites clinical colleagues and patients to guest blog on specific topics. Recent posts include topics such as breastfeeding, sexual dysfunction, clinical research, eating disorders and cancer prevention.

A blog entry is posted once or twice a week and readers are encouraged to leave comments or ask questions.

An extension of women's health services' online presence includes a monthly e-newsletter, *Blossom and Bloom*. Subscribers to *Blossom and Bloom* receive an e-mail every month that contains a variety of articles geared toward women. Topics cover issues such as heart failure, digestive disorders, osteoporosis, breast health, cosmetic surgery and uterine fibroids. Healthy recipes also are included, as are "Summa factoids" (brief health tips). *Blossom and Bloom* targets women ages 34 to 64 while the blog targets a younger audience (18 to 49).

For women who are pregnant, Summa's text messaging service sends weekly health-related messages based on their due date. The goal is to help women understand more about the growth and development of their babies and what they should expect at each stage of their pregnancy. The texts cover a number of topics including the health and well-being of the mother and the development of the fetus.

With the blog, e-newsletter and texting service, Summa Health System is reaching women with information and education on important health issues through multiple distribution mediums. Since women make approximately 80 percent of healthcare decisions for their families, they are more likely to be the caregivers and use healthcare services more often than men.<sup>2</sup> On a broader

scale, eight in ten adult Internet users — more than half of all adults — look for health information online. Top searches include:

- Specific disease or medical problem (66 percent)
- Certain medical treatment or procedure (56 percent)
- Doctors or other health professionals (44 percent)<sup>3</sup>

One of Summa Health System's goals in providing expert content in women's health and engaging in social networking platforms is to honor its mission to provide the highest quality, compassionate care to patients and members and to contribute to a healthier community. Given the volume of information available and disparity in reliability of sources, Summa Health System's presence on the Internet and its use of social media ensures individuals have access to trusted, accurate and valued information. In fact, Summa Health System began offering health chats in Fall, 2011 where consumers could interface with healthcare professionals. Data is being harvested to determine their effectiveness.

Whether social networking influences an individual to modify his/her health habits is a subject of debate. In addition, larger socio-economic factors come into play — factors such as identifying audiences and messages and if audiences (such as the underserved/underinsured) have access to hardware, software and other tools to engage in social media opportunities.

With a rich history in clinical research, Dr. von Gruenigen and her team joined forces with researchers from Kent State University to apply for grants from the National Institutes of Health and the National Science Foundation to better understand how to use social media channels to reduce health disparities in the community.

A recent study from the National Cancer Institute, "Social Media Use in the United States: Implications for Health Reform," notes:

*"A key finding of this study offers new and important implications for health communication in this digital age: among Internet users, social media are found to penetrate the population regardless of education, race/ethnicity, or healthcare access... Considering implications of health communication efforts, the results of this study suggest that in the future, social media promises to be a way to reach the target population regardless of socioeconomic and health-related characteristics. If we can enable broader and more equitable Internet access, thus reducing the digital divide, the potential for impacting the health and health behavior of the general U.S. population through social media is tremendous.*

*"Furthermore, the results showed social networking sites are used by African Americans at a higher rate than by non-Hispanic whites. Given the continuing increase in Internet penetration, these findings suggest a potential systematic shift in the communication pattern that transcends the traditional digital*

divide. Future studies should continue to examine the impact of changing technologies on patterns of health disparities. On the practice side of health communication, social media outlets may represent an excellent opportunity to reach traditionally underserved members

of the population.”<sup>4</sup>

More research is needed to understand the relationships between social networking, changes in health behaviors and health disparities, but we do know the importance of engaging with online,

mobile and connected consumers about positive and educational health messages. It may seem simple, but with the widespread usage and open accessibility of social media, we cannot ignore the power social networking has to make a difference. ■

<sup>1</sup>Found in Cache. “Hospital Social Network List.” See: <http://ebennett.org/hssl/>

<sup>2</sup>United States Department of Labor. “General Facts on Women and Job Based Health.” See: <http://www.dol.gov/ebsa/newsroom/fshlth5.html>

<sup>3</sup>The Pew Research Center’s Internet & American Life Project: The Social Life of Health Information, 2011. “Health Topics” (2011). See: <http://www.pewinternet.org/Reports/2011/HealthTopics.aspx>

<sup>4</sup>“Social media use in the United States: Implications for health communication.” J Med Internet Res. 2009 Nov 27;11(4):e48. See: <http://www.ncbi.nlm.nih.gov/pubmed/19945947>

Like Us on  
Facebook.



## About the Authors

**Michele L. McCarroll, Ph.D., FAACVPR**, is the women’s health research director for Summa Health System. Under Dr. McCarroll’s leadership, Summa’s Center for Women’s Health Research (SCWHR) involves a diverse team of internal and external partnerships of physicians, healthcare providers and academic researchers to accomplish the task of advancing clinical research at Summa. Prior to assuming these responsibilities, Dr. McCarroll was a grant and proposal developer for Summa Foundation, an assistant professor at Youngstown State University and a clinical research collaborator for the Summa Center for Cardiopulmonary Research. Dr. McCarroll currently holds academic appointments as adjunct faculty in the department of biology at the University of Akron and adjunct assistant professor in the School of Public Health and Health Professions at the University of Buffalo, SUNY. She is an American College of Sports Medicine-certified clinical exercise specialist, a fellow of the American Association of Cardiovascular and Pulmonary Rehabilitation and a frequent presenter at local and national conferences. With an interest in patient-centered outcomes, Dr. McCarroll has published dozens of abstracts and publications as well as received funding for her research interests. Dr. McCarroll recently played a key role in supporting research efforts led by Vivian von Gruenigen, M.D., on social media and health and the implementation of a Robotic Operating Room Computerized Checklist (RORCC) to improve patient safety sponsored by Intuitive Surgical, Inc.

**Julie Uehara Sur** received her bachelor’s in communications and public relations from Bradley University in Peoria, Illinois. She currently focuses on a variety of media relations, expert visibility, issues management and social media initiatives for Summa Health System. Prior to her position with Summa Health System, Sur was an account executive at Hill and Knowlton Public Relations and Landau Public Relations, two PR firms in Chicago and Cleveland. Sur developed and directed the effort to engage Summa Health System and its entities in social media, including Facebook, Twitter and YouTube. She conceptualized Summa Health System’s women’s health blog, Flourish, and serves as the editor, content manager and planner. Flourish covers a range of topics important to women’s health including pregnancy, heart health, parenting, mental health and cancer. Sur provided support on a National Institutes of Health (NIH) submission entitled “Analyzing network usage of online social media to reduce health disparities among women.” The pending R21 grant focuses on social network analysis and its effects on health outcomes.

# 2011 ACCOMPLISHMENTS

## PUBLICATIONS

*Application of Patient-Reported Outcomes Measurement Information System to Chronic Pelvic Pain.* J Minim Invasive Gynecol. 2011 Mar-Apr;18(2):189-93. **Fenton BW**, Palmieri P, Diantonio G, **von Gruenigen VE**.

*Characteristics Associated with Severe Perineal and Cervical Lacerations During Vaginal Delivery.* Obstet Gynecol. 2011 Mar;117(3):627-35. Landy HJ, Laughon SK, Bailit JL, Kominiarek MA, Gonzalez-Quintero VH, Ramirez M, Haberman S, Hibbard J, Wilkins I, Branch DW, Burkman RT, Gregory K, Hoffman MK, Learman LA, **Hatjis C**, Vanveldhuisen PC, Reddy UM, Troendle J, Sun L, Zhang J; Consortium on Safe Labor.

*A Comparison of Obstetric Maneuvers for the Acute Management of Shoulder Dystocia.* Obstet Gynecol. 2011 Jun;117(6):1272-1278. Hoffman MK, Bailit JL, Branch DW, Burkman RT, Van Veldhuisen P, Lu L, Kominiarek MA, Hibbard JU, Landy HJ, Haberman S, Wilkins I, Gonzalez-Quintero VH, Gregory KD, **Hatjis CG**, Ramirez MM, Reddy UM, Troendle J, Zhang J; Consortium on Safe Labor.

*Comparison of Teenaged Video Gamers vs. PGI-I Residents in Obstetrics and Gynecology on a Laparoscopic Simulator.* J Minim Invasive Gynecol. 2011 Mar-Apr;18(2):169-72. Fanning J, **Fenton BW**, Johnson C, Johnson J, Rehman S.

*Contemporary Cesarean Delivery Practice in the United States.* Am J Obstet Gynecol. 2010 Oct;203(4):326.e1-326.e10. Zhang J, Troendle J, Reddy UM, Laughon SK, Branch DW, Burkman R, Landy HJ, Hibbard JU, Haberman S, Ramirez MM, Bailit JL, Hoffman MK, Gregory KD, Gonzalez-Quintero VH, Kominiarek M, Learman LA, **Hatjis CG**, van Veldhuisen P; Consortium on Safe Labor. Eunice Kennedy Shriver National Institute of Child Health and Human Development, National Institutes of Health, Bethesda, MD, USA.

*Fast Facts: Gynecologic Oncology.* Shahabi S, Smith JR, Del Priore G. Health Press Limited, Elizabeth House, Queen Street, Abingdon, Oxford, UK. 2010. Gynecol Oncol. 2011;120(1):162. **von Gruenigen VE**, book reviewer.

*Feasibility of a Lifestyle Intervention for Ovarian Cancer Patients Receiving Adjuvant Chemotherapy.* Gynecol Oncol. 2011 Aug;122(2):328-33. **von Gruenigen VE**, Frasure HE, Kavanagh MB, Lerner E, Waggoner SE, Courneya KS.

*Gynecol Oncol. Women's Cancer Survivorship Special Issue.* 2011 Fall. **von Gruenigen VE**, ed.

*Healthcare Reform: Will Quality Remodeling Affect Obstetrician-gynecologists in Addition to Patients?* Obstet Gynecol. 2011 May;117(5):1167-9. **von Gruenigen VE**, **Deveny TC**.

*Hormone Replacement Therapy in Gynecologic Cancer Survivors: Why Not?* Gynecol Oncol. 2011 Aug;122(2):447-54. Ibeanu O, Modesitt SC, Ducie J, **von Gruenigen VE**, Agueh M, Fader NA.

*Implementing an Induction Scheduling Procedure and Consent Form to Increase Quality of Care.* Submitted. **Doyle J**, **Kenny T**, **Burkett A**, **von Gruenigen VE**.

*Lifestyle Changes in Endometrial Cancer Survivorship.* Obstet Gynecol. 2011 Jan;117(1):93-100. **von Gruenigen VE**, Waggoner SE, Frasure HE, Kavanagh MB, Janata JW, Rose PG, Courneya KS, Lerner E.

*The Maternal Body Mass Index: A Strong Association with Delivery Route.* Am J Obstet Gynecol. 2010 Sep;203(3):264.e1-7. Kominiarek MA, Vanveldhuisen P, Hibbard J, Landy H, Haberman S, Learman L, Wilkins I, Bailit J, Branch W, Burkman R, Gonzalez-Quintero VH, Gregory K, **Hatjis C**, Hoffman M, Ramirez M, Reddy UM, Troendle J, Zhang J; Consortium on Safe Labor.

*Palliative Care for Patients with Ovarian Cancer.* Clinical Obstetrics and Gynecology. Copeland, editor. Lippincott Williams & Wilkins, 2011. Radwany S, **von Gruenigen VE**.

*Pathways to Progress in Women's Cancer.* Research Summit White Paper Report of the Society of Gynecologic Oncologists. 2011. **von Gruenigen VE**, co-author.

*A Performance Improvement Process to Tackle Tachysystole.* JOGNN. Forthcoming 2011 Sep-Oct. **Doyle J**, **Kenny T**, **Burkett A**, **von Gruenigen VE**.

*Physical Activity and Gynecologic Cancer Survivorship.* Recent Results Cancer Res. 2011;186:305-15. Gil KM, **von Gruenigen VE**. ■

## PRESENTATIONS

*Building Bridges: The Identification of Core Symptom and Health-related Quality of Life Domains for Use in Cancer Research.* **von Gruenigen VE**. National Cancer Institute. Bethesda, MD. September, 2011.

*Chronic Pelvic Pain: A multidimensional approach to the neurobiology and implications for novel treatments.* **Fenton BW**. University Hospitals Case Medical Center, Cleveland, OH. 2011.

*Development of a da Vinci® Robotic Operating Room Checklist to Improve Patient Outcomes.* **von Gruenigen VE**, McCarroll ML, Zullo MD, **Andrews S**, **Ferris E**, **Mendise T**, **Fenton BW**, Scharsu R, Bala B, Christman M, Klinker M, Christman A. Intuitive Surgical, Inc. Clinical and Research Fellows Conference. Sunnyvale, CA. July, 2011.

*Does Quality "Bundling" Improve Obstetrical Outcomes? A comparative study of elective inductions.* **Kenny TH**, Nicodemo JM, Fenton BW, **von Gruenigen VE**. American College of Obstetricians and Gynecologists. Washington, DC. April, 2011.

*Emergency Simulations in Obstetrics.* **Drake T**, **Snyder T**. ACOG & AWHONN Ohio Section Conference. Columbus, OH. August, 2011.

*Endometrial Cancer Survivorship: What does weight have to do with it?* **von Gruenigen VE**. Cleveland Clinic Medina Hospital Grand Rounds. Medina, OH. July, 2011.

*The End Stage Gynecologic Oncology Patient: Issues regarding pain and palliative care.* **von Gruenigen VE**. Society of Gynecologic Oncologists. Orlando, FL. March, 2011.

*A Feasibility and Practicality Evaluation of Patient Care Checklists.* **Fenton BW**, Tabet M, **von Gruenigen VE**. American College of Obstetricians and Gynecologists. Washington, DC. April, 2011.

*The Neurobiology of Chronic Pelvic Pain.* **Fenton BW**. NorthShore University Health System Grand Rounds. Evanston, IL. 2011.

*Ovarian Cancer Survivorship: Quality of life, complementary medicine, and lifestyle issues.* **von Gruenigen VE**. Gynecologic Cancer Foundation. Albuquerque, NM. April, 2011

*Physical Well Being Mediates the Association Between Body Mass Index and Depression in Endometrial Cancer Survivors: A structural equation modeling approach.* Nock NL, Frasure H, Berger NA, **von Gruenigen VE**. American Society of Preventive Oncology (ASPO) 35th Annual Meeting. Las Vegas, NV. March, 2011.

*Recommended Core Set of Patient-reported Symptoms and Health-related Quality of Life (HRQOL) Domains in Ovarian Cancer.* Wenzel L, Cella D, Donovan H, Donovan K, Walker J, Gaines M, **von Gruenigen VE**, Penson R, Reeve B, Bruner D. International Society for Quality of Life Research 18th Annual Conference. Washington, DC. October, 2011.

*Safety in Obstetrics: Recipes from our cookbook.* **Doyle, J**. AWHONN Annual National Convention. Denver, CO. June, 2011.

*Susan B. Anthony Lunch with a Notable Woman.* **von Gruenigen VE**. Women's Network, Inc. Akron, OH. June, 2011.

*Timing and Extent of Surgery in the Elderly.* **von Gruenigen VE**. International Society of Geriatric Oncology. Paris, France. November 4-5, 2011.

*Using Neuroimaging to Demonstrate Changes in Food Behavior in Obese Endometrial Cancer Survivors Enrolled in a Lifestyle Intervention.* Nock NL, Frasure H, Dimitropoulos A, **von Gruenigen VE**. Obesity Society 29th Annual Scientific Meeting. Orlando, FL. October, 2011. ■

# MEDICAL STAFF LEADERSHIP FOR WOMEN'S HEALTH SERVICES

## SUMMA HEALTH SYSTEM

Vivian von Gruenigen, M.D., a physician with Summa Physicians Inc. (Gynecology/Oncology), is a recognized expert in gynecologic oncology. She serves as system medical director, women's health services, Summa Health System and chair of the department of obstetrics and gynecology at Summa Akron City and St. Thomas Hospitals. Prior to her position at Summa Health System, Dr. von Gruenigen was director of robotic surgery at University Hospitals Case Medical Center in Cleveland, Ohio, and associate professor, department of reproductive biology at the Case School of Medicine. Dr. von Gruenigen has been named one of the "Best Doctors in America" by the Consumer's Research Council of America as well as one of "America's Top Oncologists" by *Cleveland Magazine*. She also was named honorary chair of Athena International Leadership. She is the author of over 100 journal articles and abstracts and is an editorial board member at *Gynecologic Oncology*. Dr. von Gruenigen is a board member at Gynecologic Cancer Foundation, American Board of Obstetrics and

Gynecology's Excellence Foundation and Summa Health System's Accountable Care Organization. She is a board examiner for the American Board of Obstetrics and Gynecology and is preparing the 2012 written board examination in gynecologic oncology. She also is the principal investigator (PI) for two active, NCI-funded Gynecologic Oncology Group clinical trials, "Quality of Life and Care Needs in Advanced Ovarian Cancer Patients" and "A Randomized Phase II Trial of Primary Carboplatin and Paclitaxel versus Carboplatin in Elderly Women with Ovarian, Peritoneal Primary or Tubal Cancer." Her research has been funded by the government, Lance Armstrong Foundation, American Cancer Society and Summa Foundation. ■



VIVIAN VON GRUENIGEN, M.D.

*Chair, Obstetrics and  
Gynecology  
System Medical  
Director  
Women's Health  
Services  
Summa Akron City  
and St. Thomas  
Hospitals  
Summa Foundation  
Endowed Chair in  
Women's Health*

Angela C. Silber, M.D., is a physician at Summa Akron City and St. Thomas Hospitals specializing in maternal fetal medicine. Originally from Porto Alegre, Brazil, Dr. Silber obtained her medical degree from the Federal Foundation for Medical Sciences and completed her residency at Santa Casa Hospital before relocating to the U.S., where she completed another residency in obstetrics and gynecology at University Hospitals Case Medical Center. Dr. Silber was fellowship trained in maternal fetal medicine at Thomas Jefferson University Hospital and Hospital of the University of Pennsylvania in Philadelphia. Prior to her position at Summa Health System, she practiced as a diagnostic medical sonographer in the high-risk ultrasound unit at University Hospitals MacDonal Women's Hospital. Dr. Silber is a clinical instructor at Summa Akron City Hospital and won a National Faculty Award from the American College

of Obstetricians and Gynecologists for her excellence in medical education. She has helped to raise public awareness of maternal fetal health issues and served as the 2010 honorary chair of Akron's March of Dimes – March for Babies fundraiser to support community programs promoting healthy, full-term pregnancies. She is a fellow of the American College of Obstetrics and Gynecology and a member of the Society for Maternal Fetal Medicine. Dr. Silber is the author of several peer-reviewed publications including "Hyperosmolar hyperglycemic state of pregnancy with intrauterine fetal demise and preeclampsia" published by *American Journal of Perinatology* and "Congenital pulmonary lymphangiectasis sequence: a rare, heterogeneous, and lethal etiology for prenatal pleural effusion" published by *Prenatal Diagnosis*. ■



ANGELA C. SILBER, M.D.

*Chief of Maternal  
Fetal Medicine*



Chief of  
Gynecologic  
Oncology

Stephen Andrews, M.D., a physician with Summa Physicians Inc. (Gynecology/Oncology), came to Summa Health System by way of private practice in the Columbus, Ohio, region and is a veteran of the U.S. Army where he served as a major in the medical corps. Prior to his position at Summa Health System, Dr. Andrews was associate professor, department of obstetrics and gynecology, division of gynecologic oncology at the University of Toledo and won the Outstanding Faculty and Outstanding Clinical Faculty awards during his tenure there. He has continued his commitment to medical education at Summa Health System and was honored with the Teacher of the Year award in 2010. With a definitive interest in ovarian cancer, he has authored dozens of journal articles and abstracts, including "Topotecan weekly bolus chemotherapy for relapsed

platinum-sensitive ovarian and peritoneal cancers," published by *Gynecologic Oncology*, and "Aromatase inhibitors increase the sensitivity of human tumor cells to monocyte-mediated, antibody-dependent cellular cytotoxicity," published by *The American Journal of Surgery*. He also is a contributing author of *Handbook of Cancer Chemotherapy*, 7ed. Dr. Andrews is a prolific lecturer and frequent presenter at national events. He is a member of several professional societies including the American College of Obstetrics and Gynecology, of which is he a fellow, the National Board of Medical Examiners and the Society of Gynecologic Oncologists. Dr. Andrews also has served on a number of committees throughout his career, including Summa Health System's robotic committee. ■



Chief of Gynecology

Steven M. Gorsuch, M.D., FACOG, obtained his medical degree through the joint Bachelor of Science/Doctor of Medicine (B.S./M.D.) program at Kent State University and Northeast Ohio Medical University (NEOMED). He completed his residency at Summa Health System and is board certified in obstetrics and gynecology.

Dr. Gorsuch operates a private practice and has special interests in adolescent care, menstrual problems, infertility, perimenopause and osteoporosis, as well as minimally invasive surgical techniques. ■



Chief of Obstetrics

John N. Hutzler Jr., M.D., FACOG, obtained his medical degree from West Virginia University School of Medicine and completed his residency at Summa Akron City Hospital. He has special interests in endometriosis, high-risk obstetrics and infertility, gynecologic laser and endoscopic surgeries and menopause management. Dr. Hutzler also operates a private practice and he estimates that he has performed more than 10,000 deliveries since entering practice. He

holds an academic appointment as a clinical associate professor of obstetrics/gynecology at Northeast Ohio Medical University (NEOMED). He is a member of the American Medical Association, the American College of Obstetrics and Gynecology and the Ohio State Medical Association. ■

Priya B. Maseelall, M.D., obtained her medical degree from Wright State University School of Medicine and completed her residency in obstetrics and gynecology at Summa Akron City Hospital. She also was fellowship trained in reproductive endocrinology and infertility at New Jersey Medical School and is board certified in obstetrics and gynecology as well as reproductive endocrinology. Dr. Maseelall is clinical assistant professor of obstetrics and gynecology at Northeast Ohio Medical University (NEOMED) and received a national faculty award from the American College of Obstetricians and Gynecologists. She is the author of dozens of abstracts and presentations including "Turner's Syndrome and Reproductive Health" presented at Akron Children's Hospital's 2nd Annual Turner's Syndrome Meeting, "Abnormal Periods" presented at Summa Wellness Institute's lecture series and "A Bridge from Pediatric Endocrinology to Reproductive Endocrinology" presented

at Hackensack University Medical Center's grand rounds. Her commitment to research has been recognized with several awards including Summa Health System's Postgraduate Resident Research Award and the American College of Obstetricians and Gynecologists' Organon Research Award. In addition, she received the Excellence in Laparoscopy Award from the American Association of Gynecologic Laparoscopists (AAGL). Dr. Maseelall is the author of numerous articles and publications such as "Ovarian Reserve Screening: What the General Gynecologist Should Know" published by *Women's Health* and "Adenomyosis: more common than you think" published by *Contemporary OB/GYN*. She is a fellow of the American College of Obstetricians and Gynecologists and is a member of several professional societies such as the American Society for Reproductive Medicine, The Society for Reproductive Endocrinology and Infertility and the American Medical Women's Association. ■



*Chief of  
Reproductive  
Health*

PRIYA B. MASEELALL, M.D.

Alexander P. Ormond III, M.D., is a physician with Summa Physicians Inc. (Obstetrics/ Gynecology). Dr. Ormond came to Summa Health System by way of private practice in Cuyahoga Falls, Ohio. He obtained his medical degree from The Ohio State University and completed his residency at Summa Akron City Hospital.

Currently, he is the director of OB/GYN triage and chief obstetrics/gynecology hospitalist at Summa Akron City Hospital. Dr. Ormond holds academic appointments as core faculty at Summa Akron City Hospital as well as clinical associate professor at Northeast Ohio Medical University (NEOMED). ■



*Chief Obstetrics/  
Gynecology  
Hospitalist*

ALEXANDER P. ORMOND III, M.D.

John R. Ahmann, D.O., obtained his medical degree from Chicago College of Osteopathic Medicine in Downers Grove, Illinois, and is board certified in pediatrics and neonatal-perinatal medicine. He completed his pediatric residency at Michigan State University Sparrow Hospital and was fellowship trained in neonatology at Cardinal Glennon Children's Hospital.

In addition to his clinical duties, Dr. Ahmann holds academic appointment at Northeast Ohio Medical University (NEOMED) as assistant professor of clinical pediatrics. ■



*Chief of Pediatrics*

JOHN AHMANN, D.O.



Chief of Robotic  
Surgery

Thomas J. Mendise, M.D., MS, FACOG, obtained his medical degree from St. George's University School of Medicine in Grenada, West Indies, and completed his residency at Saint Barnabas Medical Center in Livingston, New Jersey, where he was the hospital administrative chief resident. He also obtained his master's in cell and molecular biology from the University of Toledo and holds academic appointment as clinical assistant professor of obstetrics and gynecology at Northeast Ohio Medical University (NEOMED). Dr. Mendise volunteered as a gynecologic surgeon at the CRUDEM Foundation in Milot, Haiti, and was recognized with a humanitarian award from the Knights of Malta for his work there. In addition, Dr. Mendise has been recognized for his commitment to medical education, receiving the Association of Professors of Gynecology

and Obstetrics Excellence in Teaching Award and the Mount Sinai School of Medicine Excellence in Teaching Award. He also is an active researcher and participated in studies such as "A Randomized Controlled Trial of Cervical Ripening in Patients with PROM and PPROM Using an Intracervical Balloon Catheter and Oxytocin vs. Dinoprostone" and "Treatment of Locally Advanced Cervical Cancer with Adjuvant Hysterectomy," and received the Sidney Lefkowitz, M.D., 18th Annual Resident Research Award while at Saint Barnabas Medical Center. Dr. Mendise also was an invited speaker at the American Association of Gynecologic Laparoscopists (AAGL) annual meeting where he presented "A Novel Setup to Performing Benign Robotic Assisted Gynecologic Surgery." ■



Chief of  
Urogynecology

Robert Flora, M.D., MBA, MPH, a physician with Summa Physicians Inc. (Urogynecology), obtained his medical degree from the Medical College of Ohio. He completed his residency program in obstetrics and gynecology at the Medical College of Ohio Hospitals. Dr. Flora is board certified in obstetrics and gynecology, healthcare quality management and as a certified physician executive. He was fellowship trained in urogynecology and pelvic reconstructive surgery at Albert

Einstein College of Medicine/Montefiore Medical Center and Mt. Sinai Hospital/University of Connecticut. He is chief of Summa Health System's urogynecology program and medical director of Summa's incontinence/pelvic floor physical therapy program. He also is a professor and vice chair of the obstetrics and gynecology department at Northeast Ohio Medical University (NEOMED). ■



Medical Director,  
Pelvic Pain  
Specialty Center

Bradford W. Fenton, M.D., Ph.D., a physician with Summa Physicians Inc. (Gynecology), leads Summa Health System's Pelvic Pain Specialty Center. Under Dr. Fenton's leadership, the center provides a multidisciplinary approach to patients with this condition using an integrated care model. He is a graduate of the Boston University School of Medicine and completed his residency in obstetrics and gynecology at Georgetown University where he was honored with the Resident Research Award. Dr. Fenton has continued his research pursuits in the field of obstetrics and gynecology and has several approved projects underway at Summa, including "Effect of repetitive transcranial direct current stimulation (tDCS) on chronic pelvic pain" and "Pelvic adhesion prevention using autologous platelet enriched gel in a standardized swine model using a quantitative technique." In addition to his clinical, research and

leadership roles at Summa Health System, Dr. Fenton also holds several academic appointments including associate professor at Northeast Ohio Medical University (NEOMED) and adjunct professor, department of chemical and biomolecular engineering at the University of Akron for which he's received several awards including the CREOG ACOG National Faculty Award. He is the author of numerous articles, abstracts and presentations including: "Application of Patient-Reported Outcomes Measurement Information System to chronic pelvic pain" published by the *Journal of Minimally Invasive Gynecology*, "Comparison of teenaged video gamers vs. PGY-I residents in obstetrics and gynecology on a laparoscopic simulator" published by the *Journal of Minimally Invasive Gynecology* and "Measuring quality of life in chronic pelvic pain syndrome" published by *Expert Review of Obstetrics & Gynecology*. ■

Lara Burrows, M.D., MSc, a physician with Summa Physicians Inc. (Gynecology), is an expert in the evaluation and treatment of vulvar disease, female sexual pain and interstitial cystitis. A graduate of Dartmouth School of Medicine, she completed her OB/GYN residency at Johns Hopkins Hospital and continued her postgraduate training at NYU and the University of Pittsburgh where she completed a fellowship in female pelvic medicine and reconstructive surgery. She also obtained a master's degree in clinical research design and statistical analysis from the University of Pittsburgh and has been an investigator in numerous NIH- and industry-sponsored clinical trials, assisting in research for national organizations such as The Urinary Incontinence Treatment Network and The Pelvic Floor Disorders Network. She is an elected fellow of the International Society for the Study of Vulvovaginal Disorders as well as the associate director of The Vulvovaginal Disorders Center in Washington, D.C.

She is the author of many publications, peer-reviewed articles and abstracts, including the book *100 Questions and Answers on Vulvar Cancer and Other Diseases of the Vulva and Vagina*, "Can oral contraceptives cause vestibulodynia?" published by *Journal of Sexual Medicine* and "Lower urinary tract symptoms in women with pelvic organ prolapse" published by *International Urogynecology Journal and Pelvic Floor Dysfunction*. In addition to her role as the surgical techniques editor for the *Journal of Sexual Medicine*, Dr. Burrows also is a medical writer and longtime member of the American Medical Writer's Association. She also is a member of several professional organizations, including the American College of Obstetricians and Gynecologists, of which she is a junior fellow, and the American Urogynecologic Society. Dr. Burrows is one of six clinicians in the country chosen to participate in the treatment registry for the National Vulvodynia Association. ■



*Medical Director,  
Pelvic Pain  
Specialty Center/  
Vulvar Pain*

LARA BURROWS, M.D., MSc

Edward M. Ferris, M.D., FACOG, obtained his medical degree from The Ohio State University College of Medicine and is board certified in obstetrics and gynecology. He completed his residency at Summa Health System where he was recognized as Intern of the Year and received the Louis M. Walker, M.D., Award for resident achievement in obstetrics and gynecology. Dr. Ferris is the medical education program director for Summa Health System's department of obstetrics and gynecology and is an assistant professor, department of obstetrics and gynecology at Northeast Ohio Medical University (NEOMED). His demonstrated commitment to OB/GYN medical education earned him two Excellence in Teaching Awards from the Association of Professors of Gynecology and Obstetrics. Dr. Ferris has a definitive interest in robotic surgery and led a presentation on the topic entitled "A Novel Setup to Performing Robotic Assisted Gynecologic Surgery" at

national and international conferences. He recently contributed to several articles as a subject matter expert on robotic surgery, including "Devices help doctors learn" published by the *Akron Beacon Journal* and "Driving MIS" published by *Surgical Products Magazine*. Dr. Ferris also serves on a number of Summa Health System committees, including the minimally invasive research committee and the graduate medical education committee. He is a member of several professional associations including the American Association of Gynecologic Laparoscopists (AAGL) and the Association of Professors of Gynecology and Obstetrics (APGO). ■



*Program Director,  
Medical Education*

EDWARD M. FERRIS, M.D., FACOG



*Director, Medical Clerkship*

Cheryl J. Johnson, M.D., obtained her medical degree from The Ohio State University and completed her residency in obstetrics and gynecology at Summa Akron City Hospital. She also completed a fellowship in academic medicine at Northeast Ohio Medical University (NEOMED) and participated in the Association of Professors of Gynecology and Obstetrics Academic Scholars and Leaders program. She serves as the medical clerkship director at Summa Akron City Hospital's department of obstetrics and gynecology and holds academic appointments as assistant professor at NEOMED and clinical assistant professor at Ohio University College of Osteopathic Medicine. Dr. Johnson is a fellow of the American College of Obstetricians and Gynecologists and is a member of the Association of Professors of Gynecology and Obstetrics. She has served on several Summa

Health System committees including the medical education steering committee and the women's health steering committee. She has been recognized with awards and honors such as *Kaleidoscope Magazine's* The Doctor Is In and is an invited speaker on women's health topics to numerous community organizations including the Haven of Rest and the Laurel School, an independent school for girls. Dr. Johnson is the author of several abstracts and articles including "Comparison of Teenaged Video Gamers vs. PGY-1 Residents in Obstetrics and Gynecology on a Laparoscopic Simulator" published by the *Journal of Minimally Invasive Gynecology* and "Cesarean Delivery Increases the Risk for Development of Interstitial Cystitis but Not Other Chronic Pelvic Pain Related Diagnosis," an abstract presented at Summa Health System's Resident Research Day. ■



*Medical Director, Women's Health Center*

Linda L. Upp, M.D., is a physician with Summa Physicians Inc. (Obstetrics/Gynecology). She obtained her medical degree from Wright State University School of Medicine and completed her residency at the University of Toledo Medical Center, formerly known as the Medical College of Ohio. She is board certified in obstetrics and gynecology. ■



*Service Line Director*

Susan Sorboro, RN, MSN, is the system service line director for Summa Health System women's health services. Sorboro obtained her bachelor's in nursing from The Ohio State University and her master's in nursing administration from Independence University in Salt Lake City, Utah. As system service line director, Sorboro oversees the clinical operations of the women's health services department at Summa Akron City and St. Thomas Hospitals and provides system service line oversight for women's health services in the region. Sorboro began her career at Summa Health System as a staff nurse in the general surgery unit at Summa St. Thomas Hospital and later served as clinical nursing supervisor in the nursery/postpartum and mother-baby units as well as director and clinical director of the women's health services department at Summa Akron City Hospital. With more than 30 years

of nursing management experience in women's health, Sorboro directs the strategic, clinical and quality goals of the department and has participated in several women's health initiatives, including the Premier Perinatal Safety Initiative and the Vermont Oxford Perinatal Collaborative in partnership with Akron Children's Hospital. She is a member of the OHA maternal task force and offers input on legislative changes proposed by the Ohio Department of Health. She is certified in neonatal resuscitation by the American Academy of Pediatrics and is a member of the Association of Women's Health, Gynecologic and Neonatal Nursing and the Ohio Association of Advanced Practice Nurses. Sorboro has presented at a number of national and Summa Health System entity forums including "Development of a Women's Service Line," a presentation given at Snowmass National Conference. ■

Jacqueline Trainor is the business manager for Summa Health System women's health services and is responsible for the daily operations and activities of the department. Prior to this position, Trainor was the administrative assistant for Summa's nursing administration department. Though her career has focused on healthcare administration, Trainor began on the clinical side of healthcare services, obtaining an associate's in recreational therapy and later a bachelor's in sports medicine from Malone College in Canton, Ohio. As her administrative roles progressed at Summa, Trainor also pursued national certification

at the University of Akron as a Certified Administrative Professional and is a member of the International Association of Administrative Professionals. Working closely with the women's health services department and physicians, Trainor assists in data collection, trend monitoring and compliance reporting for the service line. ■



JACQUELINE TRAINOR

*Business Manager,  
Women's Health  
Services*

Michele L. McCarroll, Ph.D., FAACVPR, is the women's health research director for Summa Health System. Under Dr. McCarroll's leadership, Summa's Center for Women's Health Research (SCWHR) involves a diverse team of internal and external partnerships of physicians, healthcare providers and academic researchers to accomplish the task of advancing clinical research at Summa. Prior to assuming these responsibilities, Dr. McCarroll was a grant and proposal developer for the Summa Foundation, an assistant professor at Youngstown State University and a clinical research collaborator for the Summa Center for Cardiopulmonary Research. Dr. McCarroll currently holds academic appointments as adjunct faculty in the department of biology at the University of Akron and adjunct assistant

professor in the School of Public Health and Health Professions at the University of Buffalo, SUNY. She is an American College of Sports Medicine-certified clinical exercise specialist, a fellow of the American Association of Cardiovascular and Pulmonary Rehabilitation and a frequent presenter at local and national conferences. With an interest in patient-centered outcomes, Dr. McCarroll has published dozens of abstracts and publications as well as received funding for her research interests. Dr. McCarroll recently played a key role in supporting research efforts led by Vivian von Gruenigen, M.D., on social media and health and the implementation of a Robotic Operating Room Computerized Checklist (RORCC) to improve patient safety sponsored by Intuitive Surgical, Inc. ■



MICHELE MCCARROLL

*Research Director,  
Summa's Center  
for Women's Health  
Research*

Summa Health System serves more than one million patients each year in comprehensive emergency, acute, critical outpatient and long-term home-care settings and represents more than 2,000 licensed, inpatient beds on the campuses of Summa Akron City Hospital, Summa Barberton Hospital, Summa St. Thomas Hospital, Summa Wadsworth-Rittman Hospital, Summa Western Reserve Hospital, Summa affiliate, Robinson Memorial Hospital and Crystal Clinic Orthopaedic Center, a joint partnership with Summa Health System. In addition, outpatient care is extended throughout a five county region in more than 20 community health centers. For more information, visit our website: [summahealth.org](http://summahealth.org)

